

# OCEANTEC



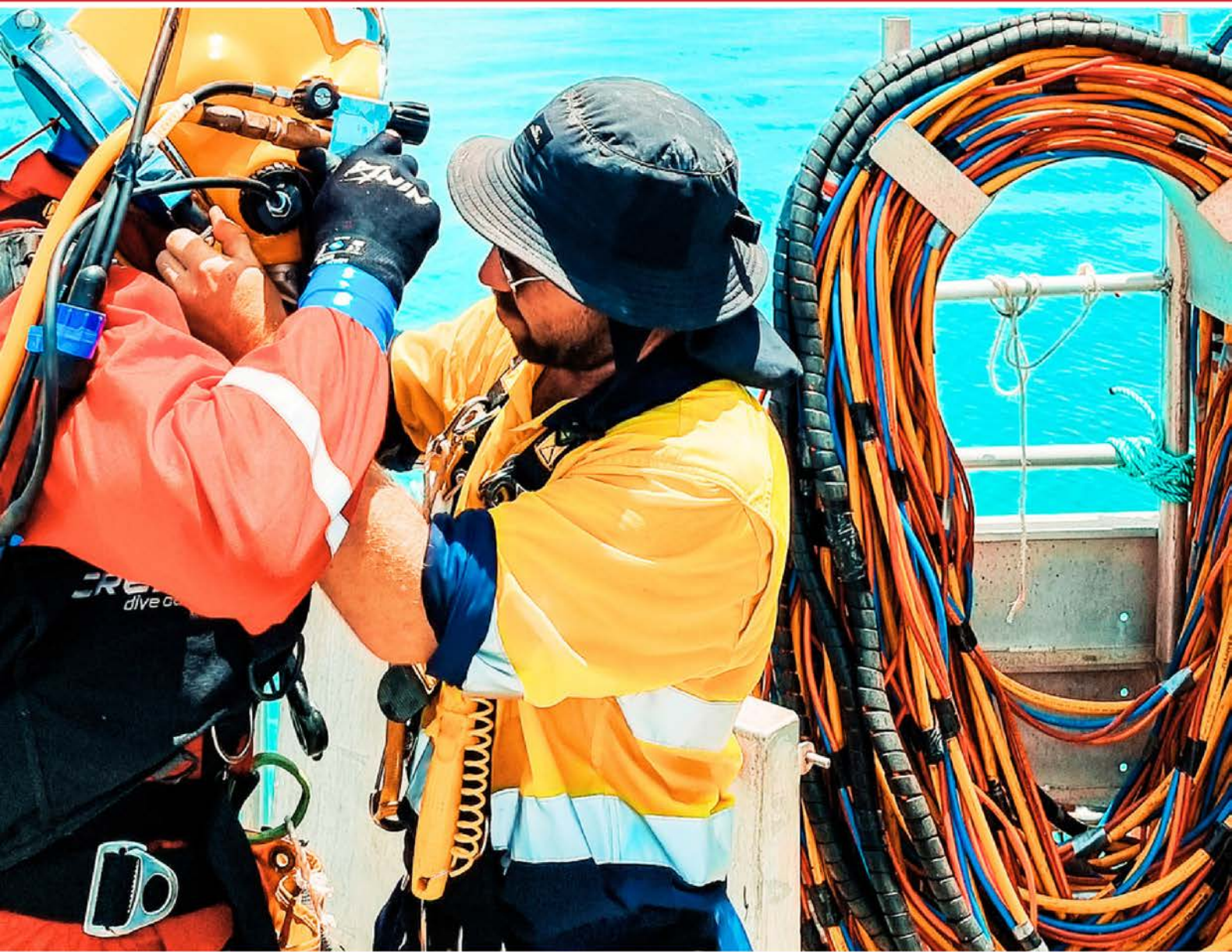
## Innovative Subsea Solutions **CAPABILITY STATEMENT**

  | [oceantec.com.au](https://www.oceantec.com.au)

EXCEPTIONAL PEOPLE | CLIENT COMMITMENT | TECHNICAL EXCELLENCES | DELIVERING SOLUTIONS



# CONTACT US



## HEAD OFFICE - NORTHERN TERRITORY

Unit 9 & 10 Fisherman's Wharf, Darwin City, 0800

## POSTAL

PO Box 1280, Darwin City,  
Northern Territory, 0810

M: 0427 839 878

E: [info@oceantec.com.au](mailto:info@oceantec.com.au)



[oceantec.com.au](http://oceantec.com.au)



# COMPANY PROFILE

Oceantec, located in Darwin, Australia, specializes in marine civil construction projects, particularly excelling in underwater operations. Our expertise lies in effectively tackling complex marine infrastructure challenges.

Our marine construction services encompass a wide range of specialized activities both above and below water, forming the core capability of our company. Additionally, our highly skilled team at Oceantec excels not only in diving operations according to AS2299:1 2015 standards, but also possesses qualifications in various trades such as Marine crew, fabrication, rigging and dogging, Industrial painters, and engineering. Furthermore, our team is well versed in project management, enabling us to deliver comprehensive services across the board.

---

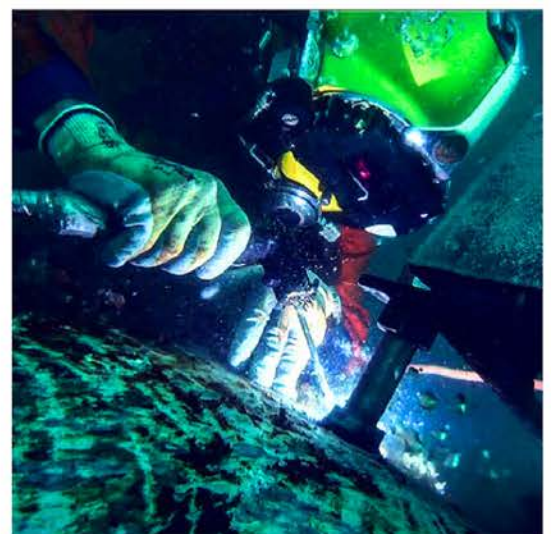
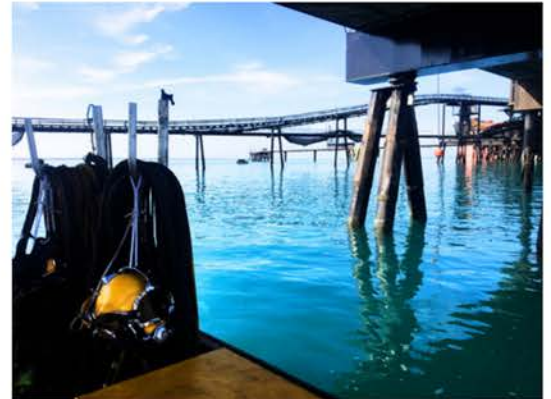
**AT OCEANTEC, WE ACKNOWLEDGE THAT OUR TEAM MEMBERS ARE OUR MOST VALUABLE ASSET, AND AS SUCH, WE CULTIVATE AN ATMOSPHERE THAT PRIORITIZES SAFETY, INNOVATION, AND ACHIEVEMENT.**

---

With a proven track record of delivering projects above and beyond client expectations, Oceantec consistently demonstrates an exceptional level of quality and meticulous attention to detail.

We provide tailor-made solutions that can only be accomplished by assembling the right individuals with the appropriate expertise, collaborating harmoniously to attain remarkable results.

Ensuring compliance with standards and placing a strong emphasis on safety are crucial factors that contribute to the continual achievements and contentment of our customers. Oceantec functions under a robust integrated management system that encompasses the criteria outlined in internationally recognized standards such as ISO 9001:2015, ISO 14001:2015, and ISO 45001:2018





# OUR COMPANY



**MATHEW MITCHELL**  
Managing Director



**ALISTER LEHMANN**  
Dive Superintendent



**JOSHUA CLARKE**  
Senior Project  
Engineer



**SAM PERHAM**  
ROV Pilot Technician



**COURTENAY  
MACLAUGHLIN**  
Dive Supervisor



**TIFFANY ALLEN**  
Dive Medical  
Technician



**TAISON  
CLARKE-TARAWHITI**  
Dive Technician



**MICHELLE MITCHELL**  
HR Manager





# QUALITY MANAGEMENT SAFETY AND ENVIRONMENTAL

Oceantec is dedicated to continuously improving its responsibilities in Quality Management, Safety, and Environmental aspects. We have devoted significant effort to implementing systems that encompass ISO requirements and we consistently strive to enhance our work environments and productivity. This commitment is reflected in our approach:

## **FOSTERING A SAFETY CULTURE:**

We prioritize safety from top management down to our staff, creating a culture that values and emphasizes safety.

## **PROMOTING TRAINING AND DEVELOPMENT:**

We actively encourage and support the further training and development of all our team members, empowering them to enhance their skills and expertise.

## **INVOLVING STAFF IN SYSTEMS DEVELOPMENT:**

We actively engage our staff in the development of systems that encourage a proactive safety environment, ensuring everyone's active participation.

## **ENSURING LEGAL COMPLIANCE:**

By conducting regular reviews, we guarantee our compliance with legislation, keeping our operations up-to-date and aligned with relevant laws and regulations.





# MARINE CIVIL CONSTRUCTION

## INSPECTION

The dedicated Oceantec team performs a diverse range of inspections that have received accreditation from esteemed classification societies such as DNV, Lloyds, and Bureau Veritas. These inspections encompass various areas, including Underwater Inspections in Lieu of Drydocking (UWILD), assessments of jetties, wharfs, and piers, scour inspections, evaluations of Subsea Cathodic Protection systems, water infrastructure assessments, and annual surveys of moorings in both private and public settings. Additionally, Oceantec is well-equipped with advanced technology to carry out pile integrity testing and conduct seabed surveys. This cutting-edge technology comprises Pulse Eddie current (PEC) equipment, remotely operated vehicles (ROV), tools for evaluating electrical integrity in cathodic protection, as well as vibracoring capabilities.



## STRUCTURAL REMEDIATION

At the heart of Oceantec lies our expertise in remediating marine structures and installations. Our specialization encompasses a diverse range of remediation techniques, including repairs of structural steel both in subsea environments and through the splash zone, stabilization efforts, concrete repairs, mooring installation, and pile remediation. Drawing upon our extensive experience, we have meticulously refined our methods of steel compensation through over plating, utilizing specialized temporary works. These techniques not only ensure cost certainty but also offer dependable solutions that have been skilfully honed over years of experience within the industry.

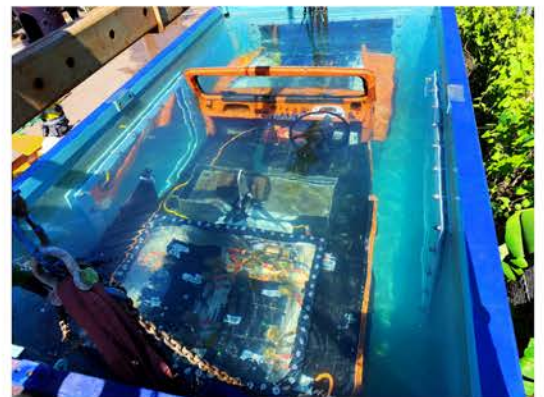
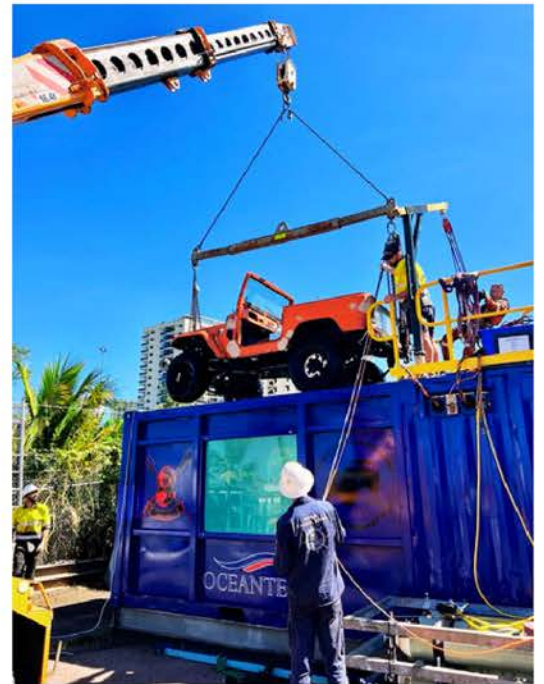




# MARINE CIVIL CONSTRUCTION

## TESTING, RESEARCH AND DEVELOPMENT

Our specialized workshop and testing facilities are designed to allow us to experiment, fine-tune methods, optimize resources, and test equipment to ensure reliable outcomes. We possess a wide range of high-performance underwater tools including drills, chain saws, cutting equipment, welding machines, and testing devices. Additionally, our customized 15,000L dive tank serves as a training ground for our personnel, where they can master various specialized techniques before deployment. This ensures that our team arrives at the project site equipped with the necessary tools and skills to perform the specific tasks efficiently. Moreover, the dive tank enables us to meet the qualifications required by AWS D3.6M:2017 for weld procedures and streamline the periodic requalification process for our subsea welders.





# VESSELS

## ISSABELLE

Dive Support Vessel  
Classification 2B, 2C  
Length 13 metres  
Design Draft 0.44 metres  
1,000kg rated hydraulic Hiab crane  
In Built IMCA Compliant Dive System



## JOSHSARELLE

Dive Support Vessel  
Classification 2D, 2C  
Length 8.4 metres  
Design Draft 0.35 metres  
Main Engines 2 x Suzuki DF175APX outboard motors  
Heavy Duty tri-axel Aluminium trailer



## 12M WORK BARGE "SEAGUL"

Self Propelled Aluminium work barge  
Classification 2D, 2C  
Length 12 metres  
Beam 4.2 metres  
Max Deck Load 9,000Kg.



## 6M WORK PUNT "ROSE"

Open deck work punt  
Classification 2D  
Length 6.0 metres  
Beam 2.4 metres  
Main Engine 1 x Suzuki 75Hp outboard

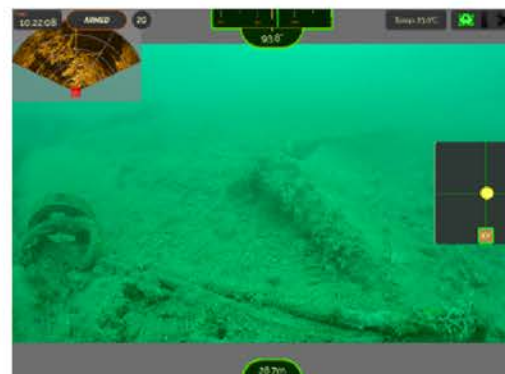




# SPECIALISED CAPABILITIES

## REMOTELY OPERATED VEHICLES (ROV)

Oceantec specializes in delivering prompt and cost-effective ROV inspections across various maritime sectors. Our skilled team of ROV operators is well-versed in performing inspections of ships, wharfs, jetties, pipelines, dams, biosecurity areas, and marine heritage sites. With their extensive experience and expertise, they can safely and efficiently provide the answers you seek, all without the need for an occupational dive team. When you choose Oceantec, you can have confidence in our ability to deliver top-quality inspection services with specialized skills, comprehensive reporting, and high-definition and 4K imager.



## SEARCH RECOVERY AND SALVAGE

Oceantec specializes in emergency response, wreck removal, and environmental protection operations in the remote regions of Northern Australia. Alongside our advanced side scan multibeam technologies that enable us to locate sunken objects, Oceantec has a strong focus on ensuring swift response times. We have specialized equipment and skilled personnel readily available at all times. As salvage operations become increasingly complex, the expertise of our multidisciplinary, seasoned teams becomes essential. Oceantec deploys in-house professional salvage teams and masters, and we also have a network of strategic partners who provide us with additional capabilities, such as workboats and heavy lifting vessels.



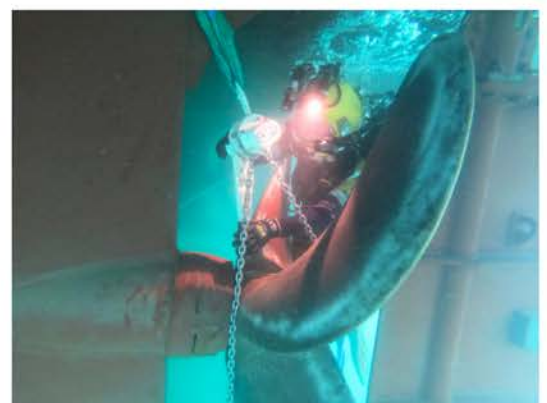


# SPECIALISED CAPABILITIES

## SHIPS HUSBANDRY AND DRY-DOCKING SUPPORT

Oceantec has the capability to handle all aspects of ship's husbandry requirements. Our extensive expertise in conducting underwater maintenance, inspections, and repairs encompasses a wide range of commercial vessels, including small commercial fishing boats, large modern cruise-liners, all the way up to Panamax class cargo ships.

Combining our in-water capabilities with our extensive experience in ship's husbandry, we are able to efficiently inspect, evaluate, repair, and maintain the vessels' integrity without the need for costly and time-consuming dry-dock. By providing in-water ship husbandry services, we minimize downtime and extend the useful service life of the vessels. This approach also helps in reducing the cost impact of both planned and unplanned maintenance tasks, enabling a faster return to operations compared to traditional dry-dock repairs. In situations where dry-docking is necessary, Oceantec is well-versed and experienced in offering support services such as in-water cradle alignment and measurements.











  
OCEANTEC

  | [oceantec.com.au](https://www.oceantec.com.au)

EXCEPTIONAL PEOPLE | CLIENT COMMITMENT | TECHNICAL EXCELLENCES | DELIVERING SOLUTIONS